

# What's New in Time & Expense 9?

## Mobility and Expense Report Automation for Project-Driven Organizations

### Key Features:

- Fewer Clicks for All Roles
- Helps Keep Your Company Compliant
- Enhanced Expense Reporting
- Purpose Built for Project-Based Businesses
- Integration with Costpoint 7
- Automated Advance and Commitment Processing and Reporting
- Less Wasted Time doing manual processes
- Improved Employee Mobility with Touch Time
- Improved User Experience

Expense reporting has never been easy for Government Contractors and other project-driven organizations—until now. As the only fully automated Time and Expense solution purpose-built for project-focused businesses, Deltek Time & Expense with Employee Self Service 9 takes fewer clicks of the mouse to make reporting easier and more convenient for all roles and users.

Deltek Expense has always automated the expense processing workflow for stronger time-keeping and tracking, but new interface improvements, integration capabilities and mobile features serve to cut costs at every turn. Deltek Time & Expense with Employee Self Service 9 ensures that policies and procedures are automated for every type of trip and expense imaginable—whether it's domestic, international, local, or even office supplies and other daily costs. What's more, automated tasks, alerts and e-mails remind users of all levels when something requires action, such as approving an expense report, authorizing reimbursement for going over ceiling or verifying receipts.

### What's New in Deltek Time & Expense with Employee Self Service 9?

#### User Interface Improvements

Deltek Time & Expense with Employee Self Service 9 features a brand new user interface with improved user flows, to help you locate and

complete the tasking you need with less “mouse-clicking” and less time. Delivering a simpler, richer experience for your users, Deltek Time & Expense with Employee Self Service 9 also boasts all-over improved Expense Authorization and Reporting due to:

- Enhanced Advance Request Functionality
- Improved Location Tracking
- Flexible Attachment Capabilities
- Revamped Expense Wizard for Per Diem Lodging and Meals

#### Improved User Experience for Deltek Expense

With Deltek Time & Expense with Employee Self Service 9, users at all levels and roles get a richer, more user-friendly experience than with generic, patchy time-keeping solutions. That's because, as a solution purpose-built for Government Contractors and project-driven businesses, Deltek Time & Expense with Employee Self Service 9 provides the functionality that your business truly needs and uses. Attach multiple documents in multiple file formats to expense records, adjust expense ceilings when necessary to improve your Multiple Day Lodging Folio and even detail meals and travel incidentals to calculate your over-ceiling costs by days or the total of all days.

## World Headquarters:

### United States

2291 Wood Oak Drive  
Herndon, VA 20171-2823  
800.456.2009

## Worldwide Locations:

### Belgium

+32 (0) 2 709 2191

### Denmark

+45 35 27 79 00

### Germany

Frankfurt am Main  
+49 6967733106

### The Netherlands

+31 (0) 20 347 3080

### Norway

+47 22 01 38 00

### Sweden

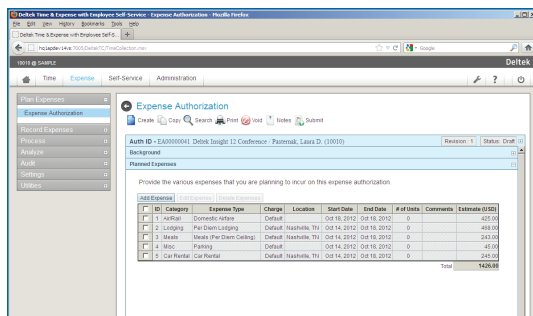
+46 (0) 8 587 077 00

### United Kingdom

London  
+44 (0) 20 7518 5010

[deltek.com](http://deltek.com)

[info@deltek.com](mailto:info@deltek.com)



## Expense Authorizations to control your expenditures

### Mobilize Employees

Because your resources are becoming more mobile every day, Deltek now offers iOS and Android Support for Deltek Time & Expense with Employee Self Service 9. Mobile iOS and Android users can enter, view, update, submit and approve timesheets, as well as view leave balances – regardless of whether they’re on-site, with clients or simply on-the-go. Delivering the ultimate in time-keeping mobility and user flexibility, Time & Expense 9’s simple and straightforward user interface has been optimized for smaller devices and form factors. The result is that end users can submit their time anywhere, anytime, in just a couple of clicks—leading to higher productivity and agility across your workforce.

### Improved Integration with Costpoint

Deltek Expense provides the ability to process advance requests from submission, to approval, to review. Also empowering you to make notification of payments, claim paid advances and track outstanding advances, Deltek Time & Expense with Employee Self Service 9’s integration to Deltek Costpoint A/P streamlines the practices for processing advanced requests and posting/paying advance vouchers.

## Expense Commitment Integration

Delivering a more robust connection to your expense commitments, Deltek Time & Expense with Employee Self Service 9 allows you to:

- Better define commitment rules
- Consider expense authorizations (blanket and non-blanket)
- Considers expense reports (with or without expense authorizations)
- Compute and report commitments by employee or by charge
- Export commitments to Costpoint
- Report commitments on Costpoint project status reports
- Create accrual journal entry export approved advances
- Receive advance payments from Costpoint
- Report Project Status Report commitments and generate/post commitment accruals

## Deltek Time & Expense with Employee Self Service 9’s Supported Platforms

### Browsers

- Internet Explorer, Chrome, Firefox and Safari

### Workstations

- Windows, Mac, Linux and Solaris

### Databases

- MS SQL Server and Oracle®

### J2EE Engine

- Ships with BEA WebLogic®

### Reporting

- Jasper

### Mobile

- iOS, Android and Blackberry

Deltek is the leading global provider of enterprise software and information solutions for professional services firms and government contractors. For decades, we have delivered actionable insight that empowers our customers to unlock their business potential. 16,000 organizations and 2 million users in over 80 countries around the world rely on Deltek to research and identify opportunities, win new business, optimize resources, streamline operations, and deliver more profitable projects. Deltek – Know more. Do more.® [deltek.com](http://deltek.com)